

SMMSu / SHRMu VRF Indoor Unit MMD-UB0071BHP-UL—Concealed Duct



Submittal Data

FCU-1C

Job Name _____ Location _____
Tag _____



SMMSu / SHRMu CONCEALED DUCT FEATURES

- R-454B Refrigerant
- Twelve sizes from 7,500 to 54,000 Btu/h
- Standard condensate pump with 24.3 in. lift capability
- Quiet operation, as low as 30 dBA
- Rear return configurable for bottom return
- Auto or manually set three fan speeds
- Five-year parts limited warranty

INDOOR UNIT MODEL		MMD-UB0071BHP-UL
PERFORMANCE		
Cooling Rated Capacity	Btu/h	7,500
Heating Rated Capacity	Btu/h	8,500
Fan Type (Qty)		Centrifugal (1)
External Static Pressure (ESP)	in.	0.4 (Factory default)
		0.6 (Max)
Standard Airflow (H / M / L)	CFM	320 / 265 / 210
Sound Pressure (H / M / L)*	dBA	39 / 34 / 30
ELECTRICAL		
Power Supply	V/Ph/Hz	208-230/1/60
Power Consumption (Input)	kW	0.07
Full Load Amps (FLA)	A	0.73
Minimum Circuit Amps (MCA)	A	0.91
Maximum Overcurrent Protection (MOCP)	A	15.0

MOTOR		
Motor Type		DC
Motor Watts		150
PHYSICAL DATA		
Pipe Connection Size - Liquid	in.	1/4 (Flare)
Pipe Connection Size - Suction	in.	3/8 (Flare)
Pipe Connection Size - Drain	in.	VP25
Refrigerant		R-454B
External Finish		Zinc Hot Dipped Steel Plate
Unit Width	in.	27-5/8
Unit Height	in.	10-7/8
Unit Depth	in.	29-1/2
Net Weight	lb	56

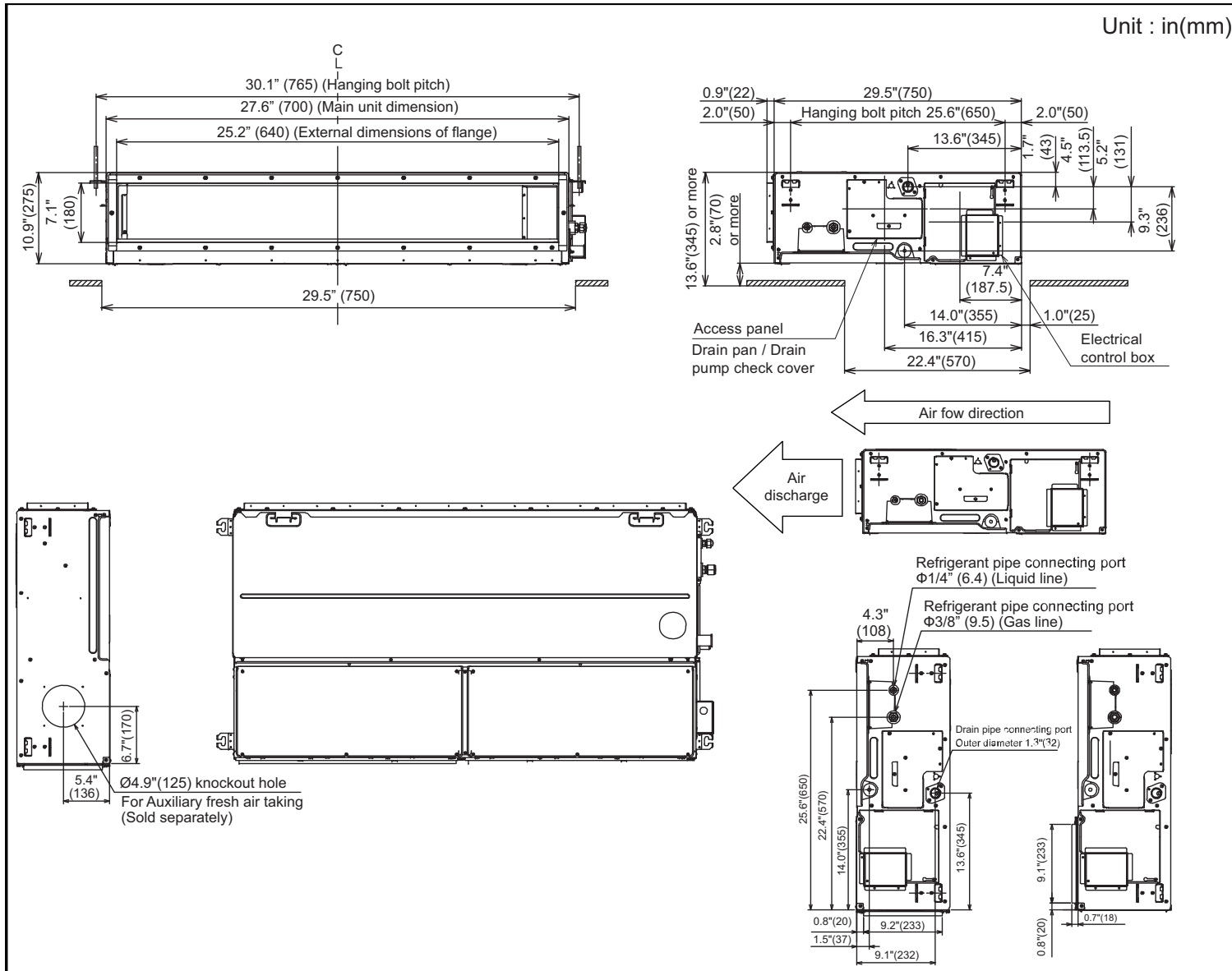
ACCESSORIES

- Wired Remote Controller (7-Day Programmable) RBC-AWSU52-UL
- Simple Wired Remote Control RBC-ASCU11-UL
- Remote Sensor TCB-TC41U-UL
- Auxiliary OA Flange TCB-FF151US-UL
- Zoning Duct Flange TCB-SF56C6BP-UL
- Filter Kit TCB-FW561DP-UL

* The actual values in an external operating environment are generally higher than the indicated values due to ambient noise.

DIMENSIONAL DRAWING CONCEALED DUCT MMD-UB0071BHP-UL

Unit : in(mm)



Edition Date: 02/25
Printed in U.S.A.

© 2025 Carrier. All rights reserved.
A Carrier Company

Form No: MMD-UB0071BHP-UL_01
Replaces: New

Manufacturer reserves the right to discontinue, or change at any time, specifications or designs without notice and without incurring obligations.

SMMSu / SHRMu VRF Indoor Unit MMD-UB0121BHP-UL—Concealed Duct



Submittal Data

FCU-1A

Job Name _____ Location _____
Tag _____



SMMSu / SHRMu CONCEALED DUCT FEATURES

- R-454B Refrigerant
- Twelve sizes from 7,500 to 54,000 Btu/h
- Standard condensate pump with 24.3 in. lift capability
- Quiet operation, as low as 30 dBA
- Rear return configurable for bottom return
- Auto or manually set three fan speeds
- Five-year parts limited warranty

INDOOR UNIT MODEL		MMD-UB0121BHP-UL
PERFORMANCE		
Cooling Rated Capacity	Btu/h	12,000
Heating Rated Capacity	Btu/h	13,500
Fan Type (Qty)		Centrifugal (1)
External Static Pressure (ESP)	in.	0.4 (Factory default) 0.6 (Max)
Standard Airflow (H / M / L)	CFM	590 / 490 / 395
Sound Pressure (H / M / L)*	dBA	44 / 41 / 35
ELECTRICAL		
Power Supply	V/Ph/Hz	208-230/1/60
Power Consumption (Input)	kW	0.13
Full Load Amps (FLA)	A	0.88
Minimum Circuit Amps (MCA)	A	1.10
Maximum Overcurrent Protection (MOCP)	A	15.0

MOTOR		
Motor Type		DC
Motor Watts		150
PHYSICAL DATA		
Pipe Connection Size - Liquid	in.	1/4 (Flare)
Pipe Connection Size - Suction	in.	3/8 (Flare)
Pipe Connection Size - Drain	in.	VP25
Refrigerant		R-454B
External Finish		Zinc Hot Dipped Steel Plate
Unit Width	in.	39-3/8
Unit Height	in.	10-7/8
Unit Depth	in.	29-1/2
Net Weight	lb	73

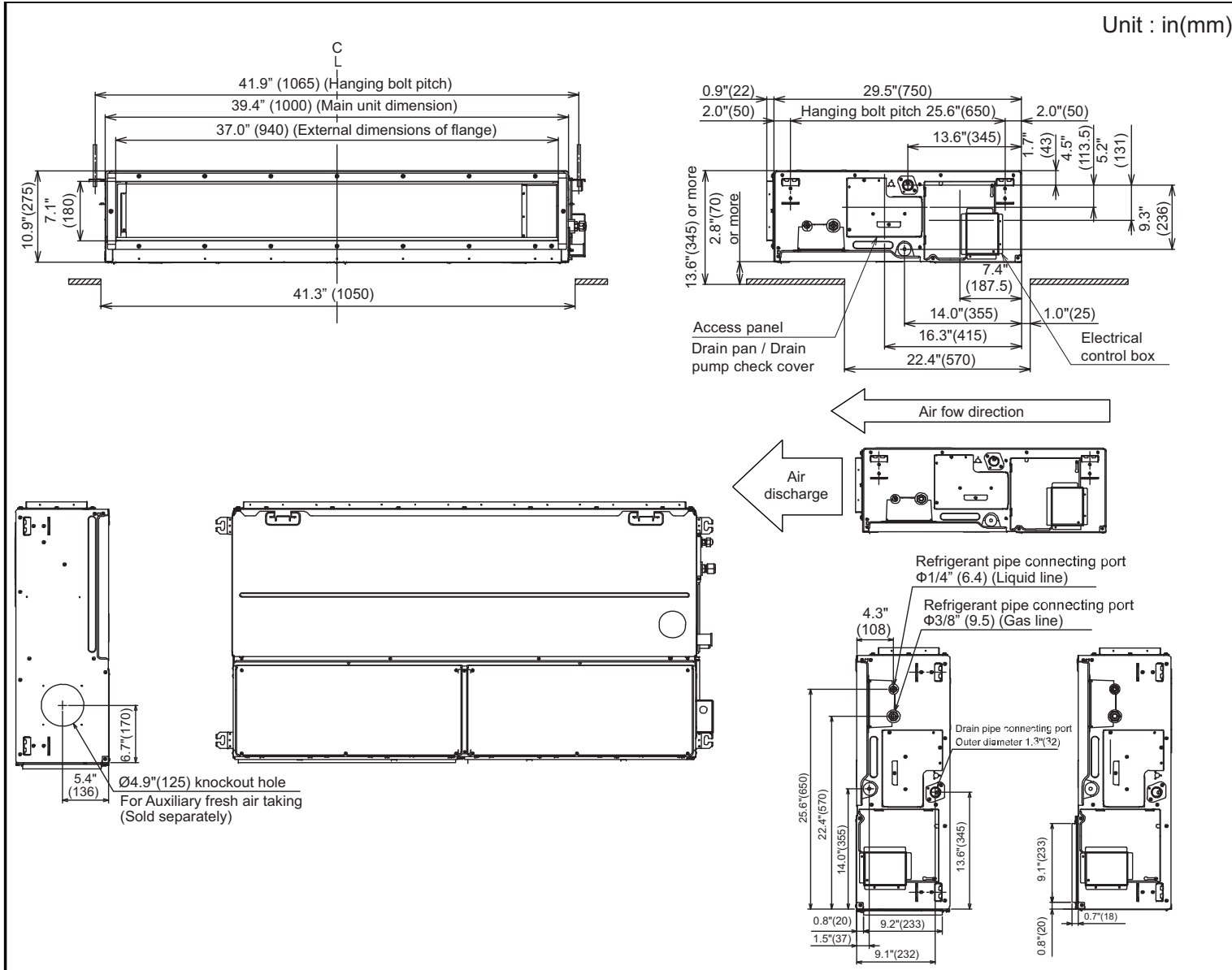
ACCESSORIES

- Wired Remote Controller (7-Day Programmable) RBC-AWSU52-UL
- Simple Wired Remote Control RBC-ASCU11-UL
- Remote Sensor TCB-TC41U-UL
- Auxiliary OA Flange TCB-FF151US-UL
- Zoning Duct Flange TCB-SF56C6BP-UL
- Filter Kit TCB-FW561DP-UL

* The actual values in an external operating environment are generally higher than the indicated values due to ambient noise.

DIMENSIONAL DRAWING CONCEALED DUCT MMD-UB0121BHP-UL

Unit : in(mm)



Edition Date: 02/25
Printed in U.S.A.

© 2025 Carrier. All rights reserved.
A Carrier Company

Form No: MMD-UB0121BHP-UL_01
Replaces: New

Manufacturer reserves the right to discontinue, or change at any time, specifications or designs without notice and without incurring obligations.

SMMSu / SHRMu VRF Indoor Unit MMD-UB0181BHP-UL—Concealed Duct



Submittal Data

FCU-1D,
FCU2-1,FCU2-3

Job Name _____ Location _____
Tag _____



SMMSu / SHRMu CONCEALED DUCT FEATURES

- R-454B Refrigerant
- Twelve sizes from 7,500 to 54,000 Btu/h
- Standard condensate pump with 24.3 in. lift capability
- Quiet operation, as low as 30 dBA
- Rear return configurable for bottom return
- Auto or manually set three fan speeds
- Five-year parts limited warranty

INDOOR UNIT MODEL		MMD-UB0181BHP-UL
PERFORMANCE		
Cooling Rated Capacity	Btu/h	18,000
Heating Rated Capacity	Btu/h	20,000
Fan Type (Qty)		Centrifugal (1)
External Static Pressure (ESP)	in.	0.4 (Factory default) 0.6 (Max)
Standard Airflow (H / M / L)	CFM	625 / 490 / 395
Sound Pressure (H / M / L)*	dBA	45 / 41 / 35
ELECTRICAL		
Power Supply	V/Ph/Hz	208-230/1/60
Power Consumption (Input)	kW	0.14
Full Load Amps (FLA)	A	1.53
Minimum Circuit Amps (MCA)	A	1.91
Maximum Overcurrent Protection (MOCP)	A	15.0

MOTOR		
Motor Type		DC
Motor Watts		150
PHYSICAL DATA		
Pipe Connection Size - Liquid	in.	3/8 (Flare)
Pipe Connection Size - Suction	in.	5/8 (Flare)
Pipe Connection Size - Drain	in.	VP25
Refrigerant		R-454B
External Finish		Zinc Hot Dipped Steel Plate
Unit Width	in.	39-3/8
Unit Height	in.	10-7/8
Unit Depth	in.	29-1/2
Net Weight	lb	73

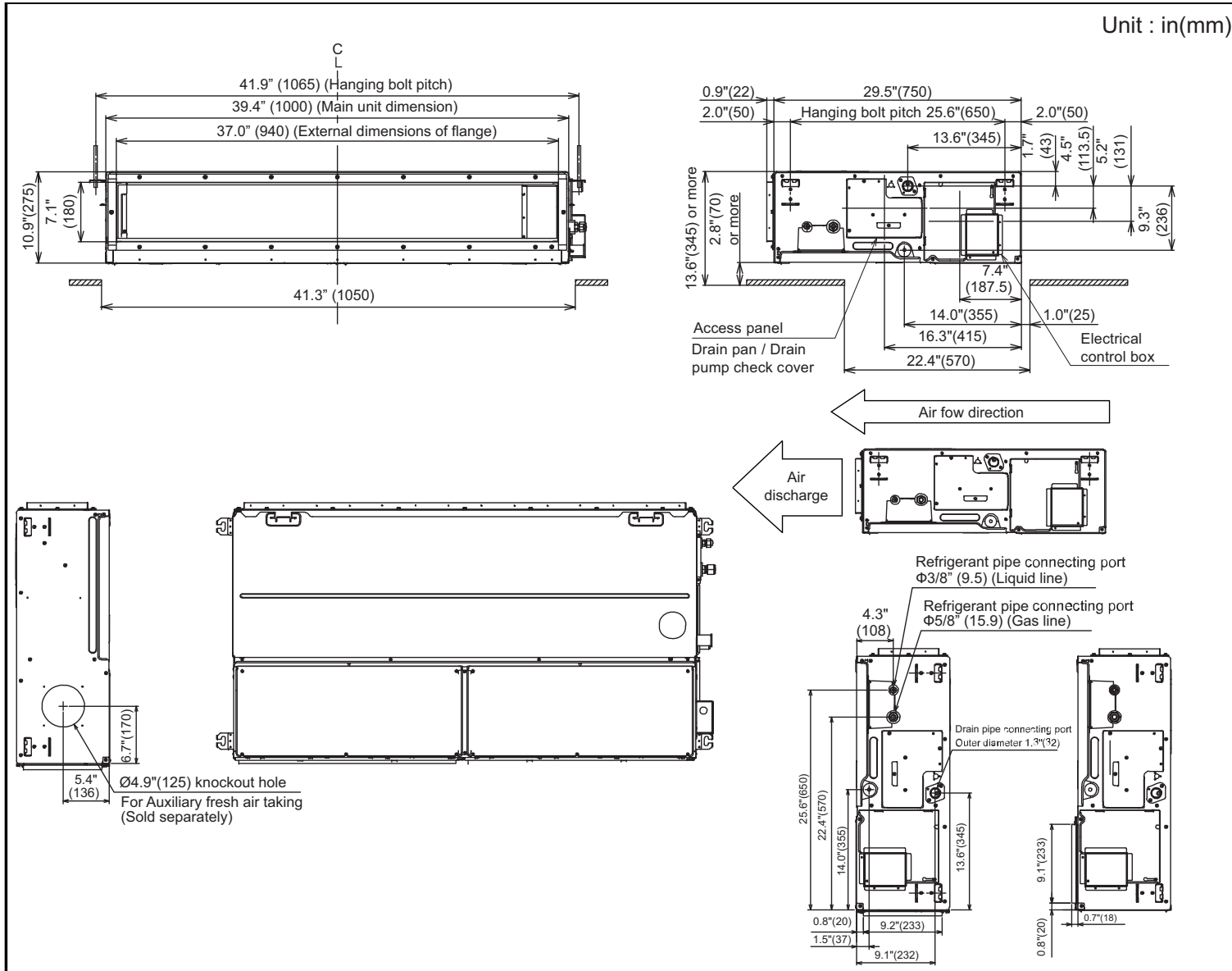
ACCESSORIES

- Wired Remote Controller (7-Day Programmable) RBC-AWSU52-UL
- Simple Wired Remote Control RBC-ASCU11-UL
- Remote Sensor TCB-TC41U-UL
- Auxiliary OA Flange TCB-FF151US-UL
- Zoning Duct Flange TCB-SF56C6BP-UL
- Filter Kit TCB-FW561DP-UL

* The actual values in an external operating environment are generally higher than the indicated values due to ambient noise.

DIMENSIONAL DRAWING CONCEALED DUCT MMD-UB0181BHP-UL

Unit : in(mm)



Edition Date: 02/25
Printed in U.S.A.

© 2025 Carrier. All rights reserved.
A Carrier Company

Form No: MMD-UB0181BHP-UL_01
Replaces: New

Manufacturer reserves the right to discontinue, or change at any time, specifications or designs without notice and without incurring obligations.

SMMSu / SHRMu VRF Indoor Unit MMD-UB0241BHP-UL—Concealed Duct



Submittal Data

FCU-1B, FCU2-2

Job Name _____ Location _____
Tag _____



SMMSu / SHRMu CONCEALED DUCT FEATURES

- R-454B Refrigerant
- Twelve sizes from 7,500 to 54,000 Btu/h
- Standard condensate pump with 24.3 in. lift capability
- Quiet operation, as low as 30 dBA
- Rear return configurable for bottom return
- Auto or manually set three fan speeds
- Five-year parts limited warranty

INDOOR UNIT MODEL		MMD-UB0241BHP-UL
PERFORMANCE		
Cooling Rated Capacity	Btu/h	24,000
Heating Rated Capacity	Btu/h	27,000
Fan Type (Qty)		Centrifugal (1)
External Static Pressure (ESP)	in.	0.6 (Factory default) 0.8 (Max)
Standard Airflow (H / M / L)	CFM	705 / 580 / 510
Sound Pressure (H / M / L)*	dBA	44 / 34 / 30
ELECTRICAL		
Power Supply	V/Ph/Hz	208-230/1/60
Power Consumption (Input)	kW	0.21
Full Load Amps (FLA)	A	1.78
Minimum Circuit Amps (MCA)	A	2.23
Maximum Overcurrent Protection (MOCP)	A	15.0

MOTOR		
Motor Type		DC
Motor Watts		150
PHYSICAL DATA		
Pipe Connection Size - Liquid	in.	3/8 (Flare)
Pipe Connection Size - Suction	in.	5/8 (Flare)
Pipe Connection Size - Drain	in.	VP25
Refrigerant		R-454B
External Finish		Zinc Hot Dipped Steel Plate
Unit Width	in.	55-1/8
Unit Height	in.	10-7/8
Unit Depth	in.	29-1/2
Net Weight	lb	93

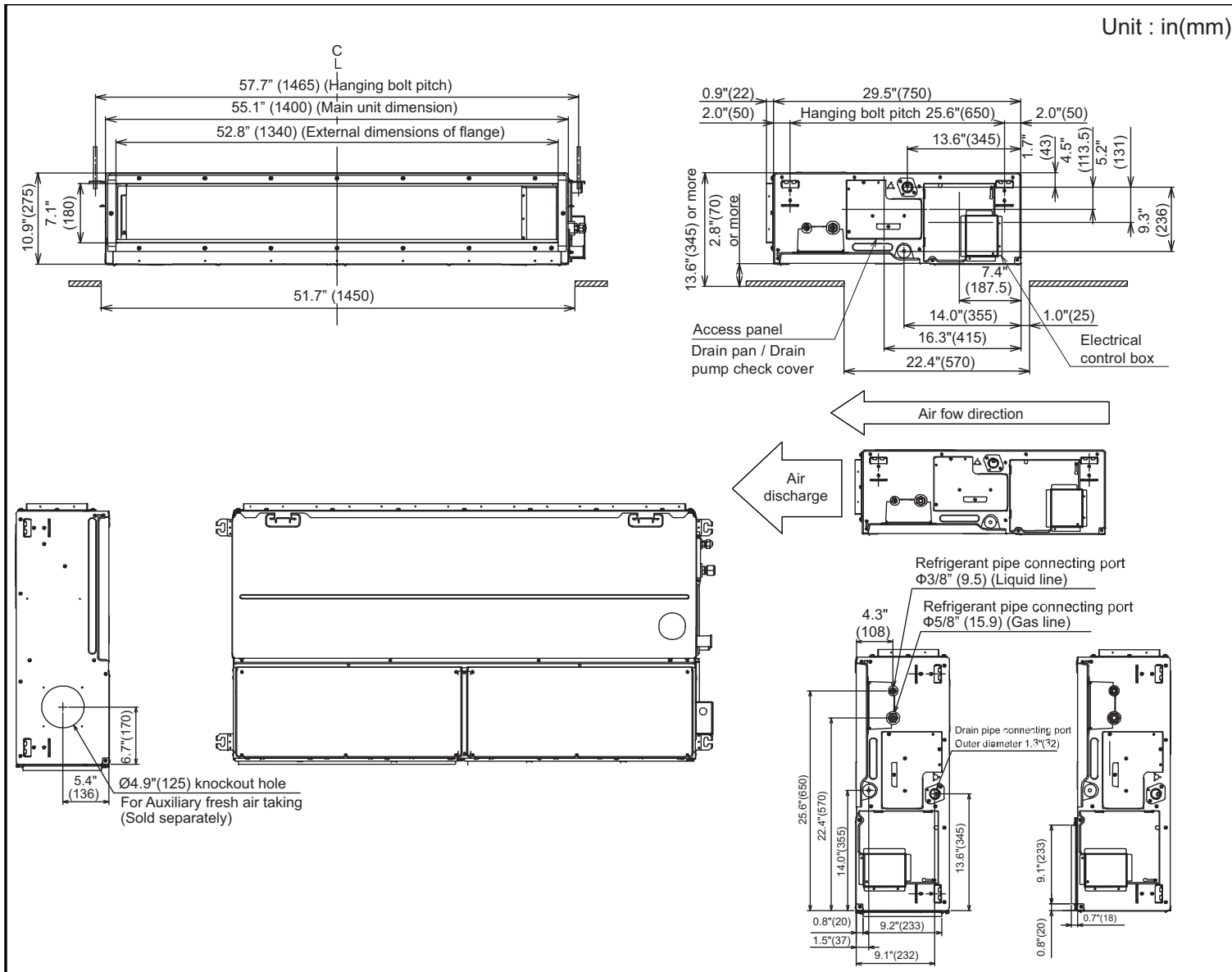
ACCESSORIES

- Wired Remote Controller (7-Day Programmable) RBC-AWSU52-UL
- Simple Wired Remote Control RBC-ASCU11-UL
- Remote Sensor TCB-TC41U-UL
- Auxiliary OA Flange TCB-FF151US-UL
- Zoning Duct Flange TCB-SF56C6BP-UL
- Filter Kit TCB-FW561DP-UL

* The actual values in an external operating environment are generally higher than the indicated values due to ambient noise.

DIMENSIONAL DRAWING CONCEALED DUCT MMD-UB0241BHP-UL

Unit : in(mm)



Edition Date: 02/25
Printed in U.S.A.

© 2025 Carrier. All rights reserved.
A Carrier Company

Form No: MMD-UB0241BHP-UL_01
Replaces: New

Manufacturer reserves the right to discontinue, or change at any time, specifications or designs without notice and without incurring obligations.

SMMS-u Single VRF Outdoor Unit MCY-MUB0608HS2P-UL—Heat Pump



Submittal Data

CU-1 AND
CU-2

Job Name _____ Location _____

Tag _____



SMMS-u VRF Heat Pump Features

- 3, 4, and 5-ton single-phase modules available
- Modules have inverter-driven twin rotary compressor
- 984 ft (300 m) actual total system piping (liquid line)
- 131 ft (40 m) actual piping length from outdoor unit to furthest fan coil
- Up to 377 ft (115 m) control wiring between outdoor units
- Up to 6560 ft (2000 m) control wiring between the outdoor units and indoor units
- Operating temperature range Cooling (db): 23 to 122 F (-5 to 50 C)
- Heating (wb): -13 to 60 F (-25 to 15.6 C)
- Protection: high pressure sensor and switch, low pressure sensor, process controller board fuse, inverter overload protection
- 7-year compressor limited warranty, 5-year parts limited warranty

Header Unit Model	MCY-MUB0608HS2P-UL	
PERFORMANCE		
Nominal Cooling Capacity	Btu/h	60,000
Nominal Heating Capacity	Btu/h	66,000
Maximum Total Connected Indoor Units		9
COOLING EFFICIENCY†		
SEER2, Ducted FCUs	Btu/Wh	19.05
SEER2, Ductless FCUs	Btu/Wh	23.95
HEATING EFFICIENCY†		
HSPF2, Ducted FCUs		10.10
HSPF2, Ductless FCUs		10.80
Fan Type (Qty)		Propeller (1)
Airflow	CFM	4070
Combined System Sound Pressure, Cooling/Heating	dBA	59/62
ELECTRICAL		
Power Supply	V/Ph/Hz	208-230/1/60
Minimum Circuit Amps (MCA)	A	37.2
Maximum Overcurrent Protection (MOP)	A	40

COMPRESSORS		
Type (Number)		Hermetic Twin Rotary (1)
Motor Output	kW	3.75
FAN MOTOR		
Motor Type (Steps)		Propeller Fan (1)
Motor Output	kW	600
PHYSICAL DATA		
Pipe Connection Size - Liquid (High Pressure)	in.	3/8 (Flare)
Pipe Connection Size - Gas (Low Pressure)	in.	3/4 (Flare)
Refrigerant		R-454B
Factory Charge††	lb	6.6
External Finish		Munsell 1Y8.5/0.5
Unit Width	in.	43.3
Unit Height	in.	35.0
Unit Depth	in.	18.1
Unit Net Weight	lb	260

LEGEND

- db — Dry Bulb
- SEER — Seasonal Energy Efficiency Ratio
- FCU — Fan Coil Unit
- HSPF — Heating Seasonal Performance Factor
- wb — Wet Bulb

†Rated per AHRI (Air-Conditioning, Heating and Refrigeration Institute) 210/240 Standard.
Cooling: Indoor 80°F (27°C) db/67°F (20°C) wb; Outdoor 95°F (35°C) db
Heating: Indoor 70°F (21°C) db; Outdoor 47°F (8°C) db/43°F (6°C) wb
††Additional charge required.

OUTDOOR UNIT HEAT PUMP MCY-MUB0608HS2P-UL DIMENSIONAL DRAWING

